

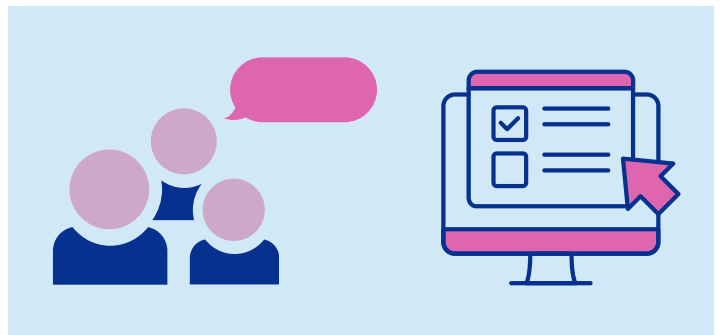
# SEEKING PARTICIPANTS FOR A PAID RESEARCH STUDY

We are testing an entirely virtual intervention designed for young people who frequently use **cannabis (marijuana)**.

## WHO CAN PARTICIPATE?

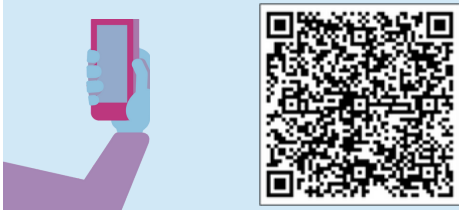
To participate, you must:

- Be 18-26 years old
- Be a primary care patient at:
  - Boston Children's Hospital Adolescent/Young Adult Medical Practice, or
  - Boston Children's at Martha Eliot
- Meet several other eligibility criteria



To learn more and see if you are eligible, scan the QR code or follow the link:

<https://redcap.link/can-do>



We are also seeking members for the study's **Young Adult Advisory Board (YAAB)**.  
Scan or click to learn about that, too!

## WHAT WOULD I DO?

CAN-DO is completely remote.  
Being a research participant involves:

- Completing surveys, on your own and with a research assistant
- Randomly being assigned to a group:
  - *MOMENT-V group*: 5 virtual study visits + doing smartphone surveys for 2 weeks
  - *Enhanced Care group*: 4 virtual study visits
- Receiving payment of up to \$260 in e-gift cards for completing study activities

Questions? Contact [can-do@childrens.harvard.edu](mailto:can-do@childrens.harvard.edu)

The Principal Investigator for this study is Lydia A. Shrier, MD, MPH.